

The Philips logo is displayed in blue, bold, sans-serif capital letters on a white background. The background of the entire advertisement is a photograph of a road at night, illuminated by several tall, modern streetlights. The road curves to the right, and a building is visible in the background under a dark sky.

Professional Lighting

RoadFlair P Category

smartscape
connected lighting systems



Sleek and superior Beyond anticipation

Fit-for-purpose design



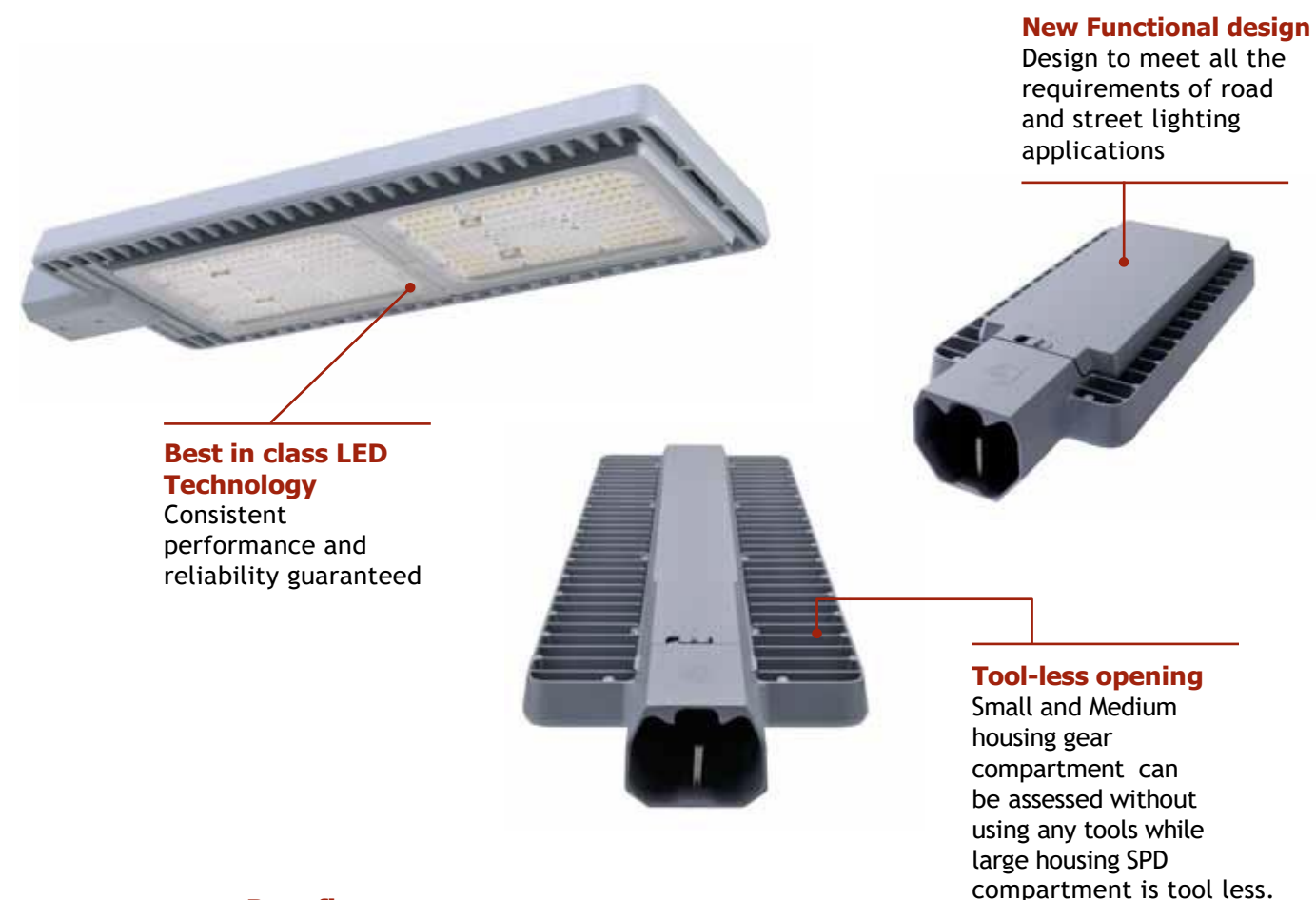
Designed for major and city roads, Philips RoadFlair is a new and exciting product set to brighten your streets beyond imagination. Smartly-designed to bring cities the highest savings possible with best in class lumen per watt, this road lighting production comes at a competitive price bound to excite.

Philips RoadFlair brings energy efficiency, improves a city's sustainability drive and delivers significant cost reduction in urban environments. The right road luminaire coupled with the right lighting application skills will create the best environment for your municipality, benefiting local communities and boosting tourism and businesses.

Application

- Roads
- Street
- Highways
- Parking

Tool-less opening, low failure rate



Benefits

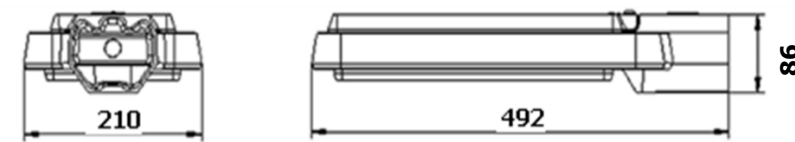
- **High lumen efficiency**
120 to 135 lumen per watt – much higher than currently available solutions.
- **Unique functional design**
Sleek, light-weight and well-designed luminaire.
- **Control and dimming ready**
Supports CityTouch connect application, 7pin Nema socket and standard outdoor dimming protocols.
- **Value for money / most competitive product in its segment**
Perfect for renovation, upgrading projects. Best in class LED lighting technology at an unmatched, competitive price.

Take the next step

See how Philips RoadFlair can address your road lighting needs. Contact your local Philips Sales Representative for more information or to schedule a personalized demonstration.

Dimensional & technical detail

Unit: mm



Type	LEDs	Power/W	CCT/K	Weight/KG	LxWxH(mm)	Wind force area (m ²)	Voltage
BRP391 23LED 140	23	17	3000	≈5	492 x 210 x 86	0.1	220-240V~ 50/60Hz
BRP391 36LED 140	36	26	3000				
BRP391 44LED 140	44	32	3000				
BRP391 23LED 140	23	17	4000				
BRP391 36LED 140	36	26	4000				
BRP391 44LED 140	44	32	4000				



Product data

General Characteristics

Type	BRP391
Lifetime	50,000 hours (70% lumen maintenance @ Ta = 35°C)
Tm21 Projection	100,000 Hours L80 Ta35C
Optics	DWV
Impact Resistance IP	IP66
SDCM	5

Light Technical Characteristics

Light source	LED
LED driver	Constant current or programmable driver options
System lumen output (lm)	Up to 38,400 lumen
Color rendering index	Minimum 70
Color Temperature	NW-4000K WW-3000K

Electrical Characteristics

Power requirement	220-240V 50/60Hz
Power factor	> 0.95 (nominal power)
Drive current	100mA - 700mA

Environmental Characteristics

Installation	Φ42-60mm pole, side entry
Windage area	BRP391 : 0.1m ² ;

Mounting height Working temperature	Optimized for 8 to 14m - 40°C < Ta < 50°C
-------------------------------------	--

Wind force	Up to 60m/s
Relative humidity	Up to 95%RH

Mechanical

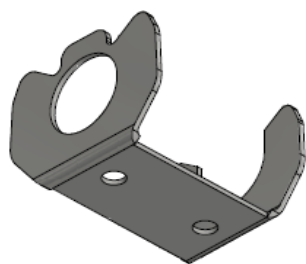
Housing Material	High pressure die-cast aluminum heat
Gasket material	Resistant silicone rubber
Cover	Transparent and weather resistant grade polycarbonate
Finishing	Gray Paint RAL7040

Product Information

Dimensions (LxWxH)	BRP391: 492 X 210 X 86
Weight	BRP391: 5kg
Certifications	CB IEC 60598, CQC, *AS/NZS 1158/*PSE
Classifications	IP66; IK08; Class I & II; RoHS
Surge protection	10KV (15kV/kA)
Control Options	Standalone dimming program, CityTouch, Additional option of 7 pin NEMA

Maintenance	Tool-less opening of gear compartment for BRP391
-------------	--

Ordering Information



Zero Degree Uplift Bracket

smartscape
connected lighting systems



SMART LIGHTING • SMART SYSTEMS • SMART PEOPLE



For more information:
Ph: 07 3357 1922
Fax 07 3357 9189
E: info@ssqld.com.au
W: www.ssqld.com.au