













# iLumen

## Aluma LED High Bay

190lm/W superior energy-saving solution

A versatile lighting fixture for various industrial, commercial, and indoor sports scenario



-  190 lm/w
-  0-10V
-  IP65
-  IK08
-  Power adjustable
-  CCT adjustable
-  Microwave
-  PIR
-  CASAMBI
-  DALI2

## Unique Design, Inspired by the Sunflower, Radiates a Warm and Bright Atmosphere

The Aluma fins not only enhance its aesthetic appeal, but also optimizes its function.



## Power & CCT Adjustable Integrated In One Fixture

(on some models only)



- Casambi or DALI+
- Microwave
- PIR sensor

## Smart Control, Reduce Waste

Microwave / pir sensor, Casambi and DALI+ options

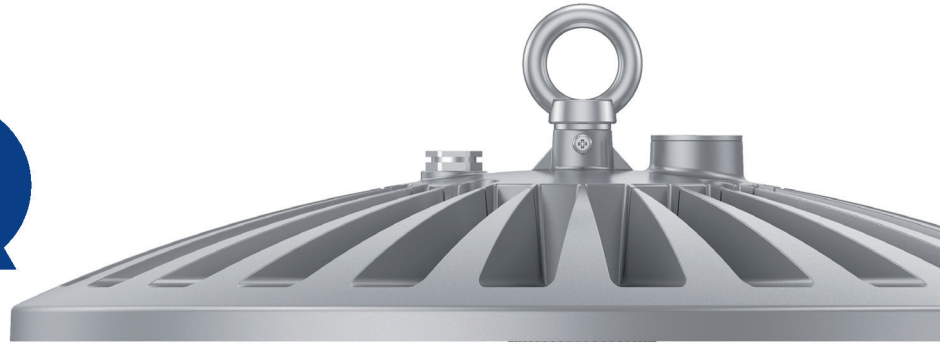
# Energy-saving and Sustainability Principle

**iLumen**

## High Lumen Efficiency

Class leading efficiency

190  
lm/W



## Low-glare Optic Design, UGR Less Than 22

Contribute to the overall comfort and satisfaction of users in the workplace.



**UGR**

UGR < 22  
CIE 190:2010



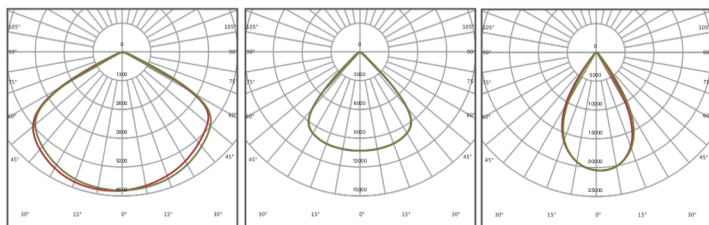
Plastic-free Package



Model No	IL-HBALU-100	IL-HBALU-120	IL-HBALU-150	IL-HBALU-200
Power Consumption(W) (±10%)	100/80/60 (Selectable)	120/96/72 (Selectable)	150/120/90 (Selectable)	200/160/120 (Selectable)
Power Factor	>0.9			
Input Voltage	120-277Vac, 50 / 60 Hz			
Driver Type	Constant Current (CC)			
Luminous Flux (±10%)	19000lm	22800lm	28500lm	38000lm
Efficacy(5000K Ra80)	190lm/W			
CCT & CRI	Adjustable or fixed CCT 3000K, 4000K or 5000K, Ra80 as standard other options on request			
Beam Angle	H66601/H66602/H66603		H99601/H99602/H99603	
Protection Rating	IP65, IK08			
Operating Temperature (°C)	-30 to + 50 (230Vac), -30 to + 45 (120Vac)			
Warranty	5 years			
Product Dimension	Φ340x143mm		Φ400x143mm	
Luminaire Net Weight	2.7kg		3.2kg	

## Photometric Diagrams

### 100W-120W beam angle

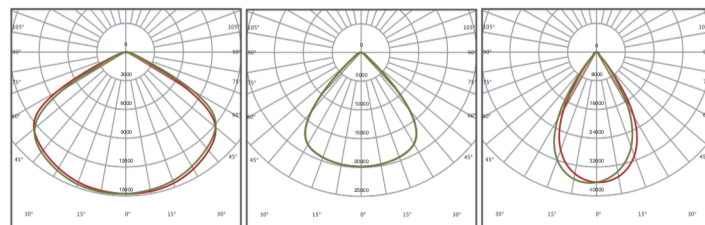


H66601 (120°)

H66602 (90°)

H66603 (60°)

### 150W-200W beam angle

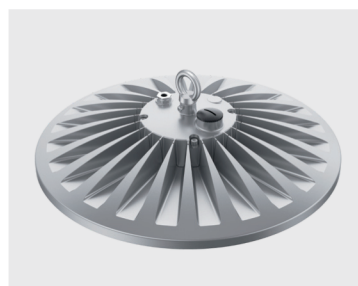


H99601 (120°)

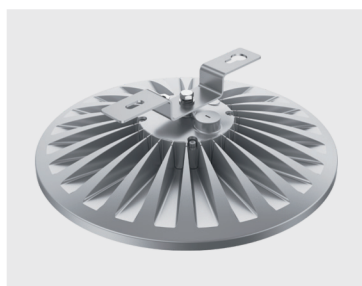
H99602 (90°)

H99603 (60°)

## Mounting Options



Loop mounting



Ceiling mounting

